

OWL

THERMO-VISION-20

AN LINEAR
TECHNOLOGIES

Is a high speed PTZ camera - an excellent system for perimeter security applications for airports, hospitals, prisons etc equipped with both thermal and day camera

Analytics

- Unidentified object detection and gesture recognition
- Motion and intrusion detection
- Virtual Fence
- Slew to Cue as per custom adjustments & auto tracking
- Camera Vandalism and tamper detection.
- Network Disconnect
- Tripwire Violation
- Object Tracking

Thermal Imaging Module:

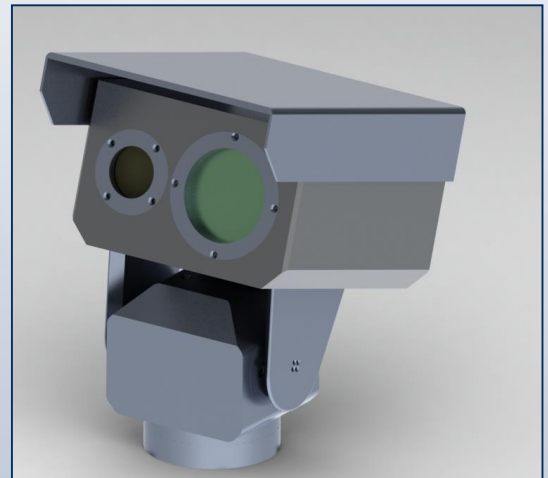
- 640 x 480 resolution, AGC, BPR etc
- Intrusion detection
- DRI Analytics
- 4x Optical Zoom

Day Module

- 1/2.8" Progressive Scan CMOS
- 1980x1080 resolution
- 30x optical zoom
- 4.3mm to 129mm

Key Specifications

- Analytics Works for Visible as well as IR Bands
- Long Range Human Detection
- Works for different picture resolution
- Analytics are Robust to illumination Changes
- Low False Alarm Rate
- Sensor Position Displayed with analytics



SPECIFICATIONS



Camera

Thermal Module

- **Sensor** ASi Microbolometer
- **Sensor Format** 640x480
- **Pixel Pitch** 17 μ m
- **Spectral Response** 8 μ m – 14 μ m
- **NETD** < 50mK (@ 25C, F#1.0)
- **MRTD** 0.17K @ 0.6 cycles/mRad
- **Lens** 26mm to 105mm cont. zoom
- **Field Of View** H-25.3 to 5.9, V-17.9 to 3.9
- **Min Focussing Distance** 4m
- **F Number** 1.4
- **Framerate** 25 fps
- **Electronic Magnification** 2x, 4x
- **Human Detection** 2000m

Day Camera

- **Sensor Type** 1/2.8" Progressive Scan CMOS
- **Sensor Format** 1980x1080
- **Min illumination** Color: 0.01 Lux @ (shutter speed 1/30 s)
- **Noise Reduction** 3D DNR
- **WDR** 120 dB
- **Lens** 4.3mm to 129mm F1.6 to F4.7
- **Optical Zoom** >20X
- **Shutter Speed** 1/1s to 1/10,000s
- **Day & Night** IR Cut Filter for day and night mode
- **Fog Penetration** On/Off
- **Framerate** 25fps/30 fps
- **BLC** Supported On/Off
- **Angle of View** 1280 Wide to 4.20 Narrow
- **Video Compression** Main Stream: H.264/MJPEG
- **Video Bitrate** 1Mbps to 10 Mbps

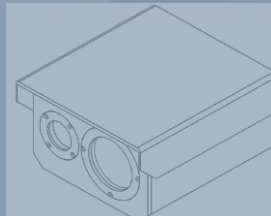
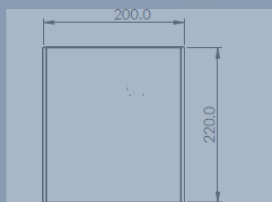
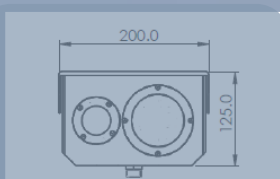
Pan / Tilt

- **PAN/ Preset Speed** Speed 0°-100°/s; User Adjustable presets
- **Tilt / Preset Speed** Speed 1 to 25 °/s
- **PAN/ Tilt-Angle** 0-360° continuous, Tilt: +90° to -90 °,
- **PAN/Tilt Manual speed** Pan – 1-90°/s / Tilt 1-25°/s
- **Network Storage** MicroSD, On Board-64GB
- **Protocols** 1Pv4/1Pv6, TCP, UDP, RTP, RTSP, RTCP, HTTP, HTTPS, DNS, DONS, DHCP, FTP, NTP, SMTP, SNMP, UPnP, PPPoE, ONVIF
- **Communication Interface** 1 RJ 45 Connector 10Base-T/100Base-TX Ethernet Port
- **Video Streaming** Dual Stream, H.264 Protocol
- **Enclosure** IP-66 (Compliant IK10/MIL810)
- **Resolution** 2 MP

General

- **Operating Conditions** -30°C to+55°C , Humidity 95% or less (non-condensing)
- **Dust/Water Protection** IP66 / IP67
- **Power Supply** 220 V AC , 60W Max
- **Power Consumption & Current** 220 V AC , 60W Max
- **Environmental** IP-66
- **Material** Aluminium
- **Weight** 12 kg

Dimensions



AnaLinear Technologies

4 A (1), GMR Hyderabad Aviation SEZ,
RGIA, Shamshabad, Hyderabad – 500108,
Telangana India