

OWL THERMO-VISION

Is a high speed PTZ camera - an excellent system for perimeter security applications for airports, hospitals, prisons etc equipped with both thermal and day camera

Analytics

- Object Detection and Classification
- Virtual Fence
- Tamper trigger
- Network Disconnect
- Tripwire Violation
- Slew to Cue
- Motion Detection
- Object Tracking
- Multiple Sector Blanking Feature
- Sensor Position Display

Thermal Imaging Module:

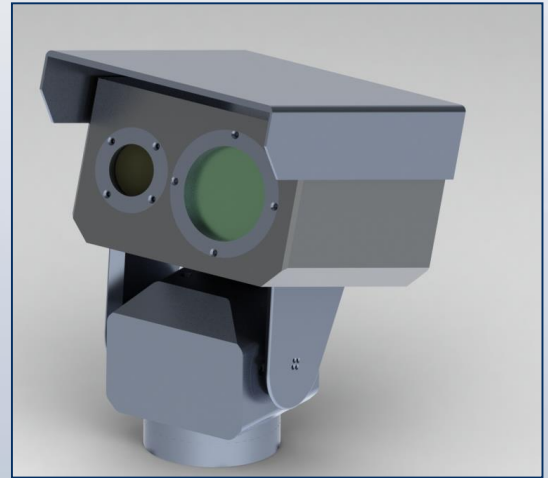
- 640 x 480 resolution, AGC, BPR etc
- Intrusion detection
- DRI Analytics
- 4x Optical Zoom

Day Module

- 1/2.8" Progressive Scan CMOS
- 1980x1080 resolution
- 30x optical zoom
- 4.3mm to 129mm

Key Specifications

- Analytics Works for Visible as well as IR Bands
- Long Range Human Detection
- Works for different picture resolution
- Analytics are Robust to illumination Changes
- Low False Alarm Rate



SPECIFICATIONS

Camera

Thermal Module

• Sensor	ASi Microbolometer
• Sensor Format	640x480
• Pixel Pitch	17 μ m
• Spectral Response	8 μ m – 14 μ m
• NETD	< 50mK (@ 25C, F#1.0)
• MRTD	0.17K @ 0.6 cycles/mRad
• Lens	26mm to 105mm cont. zoom
• Field Of View	H-25.3 to 5.9, V-17.9 to 3.9
• Framerate	25 fps
• Electronic Magnification	2x, 4x
• Human Detection	2000m
• Calibration	On Board Temperature Based One-Point Calibration
• Contrast/Brightness	Auto/Manual

Day Camera

• Sensor	1/2.8" Progressive Scan CMOS
• Sensor Format	1945 (H)x1109(V) , 2.13 Mp
• Min illumination	Color : 0.01Lux (F1.2, 1/30sec), B/W : 0.001Lux (F1.2, 1/30sec)
• Noise Reduction	3D DNR
• WDR	>100 dB
• Lens	4.3mm to 100mm F1.6 to F4.7
• Optical Zoom	> 16X
• Shutter Speed	2 to 1/10,000s
• Day & Night	IR Cut Filter for day and night mode
• Fog Penetration	On/Off
• Back Light Compensation	Off/On
• Auto White Balance	On/Off
• Framerate	25fps/30 fps
• Video Compression	Main Stream: H.264/MJPEG

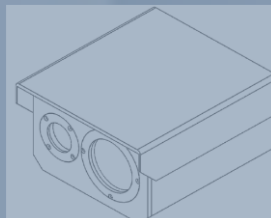
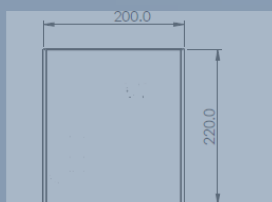
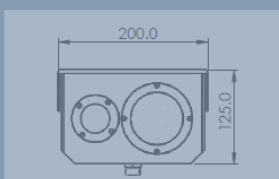
Pan / Tilt

• PAN/ Preset Speed	Speed 0°-100°/s; User Adjustable presets
• Tilt / Preset Speed	Speed 1 to 25 °/s
• PAN/ Tilt-Angle	0-360° continuous, Tilt: +90° to -90 °,
• PAN/Tilt Manual speed	Pan – 1-90°/s / Tilt 1-25°/s

General

• Network Connectivity	Ethernet
• Protocols	IPv4/IPv6, TCP, UDP, RTP, RTSP, RTCP, HTTP, HTTPS, DNS, DONS, DHCP, FTP, NTP, SMTP, SNMP, UPnP, PPPoE, ONVIF
• Communication Interface	1 RJ 45 Connector 10Base-T/100Base-TX Ethernet Port
• Display Format	Black Hot/White Hot
• Adjustments	Auto/Manual Contrast and Bright Ness Adjustments
• Video Streaming	Dual Stream, H.264 Protocol
• Storage	On-Board Storage 64Gb; SD Card
• Enclosure	IP-66 (Compliant IK10/MIL810)
• Operating Conditions	-30°C to +55°C , Humidity 95% or less (non-condensing)
• Dust/Water Protection	IP66 / IP67
• Power Supply	12VDC / POE
• Power Consumption	13W
• Material	Aluminium
• Weight	12 kg

Dimensions



AnaLinear Technologies

4 A (1), GMR Hyderabad Aviation SEZ,
RGIA, Shamshabad, Hyderabad – 500108,
Telangana India