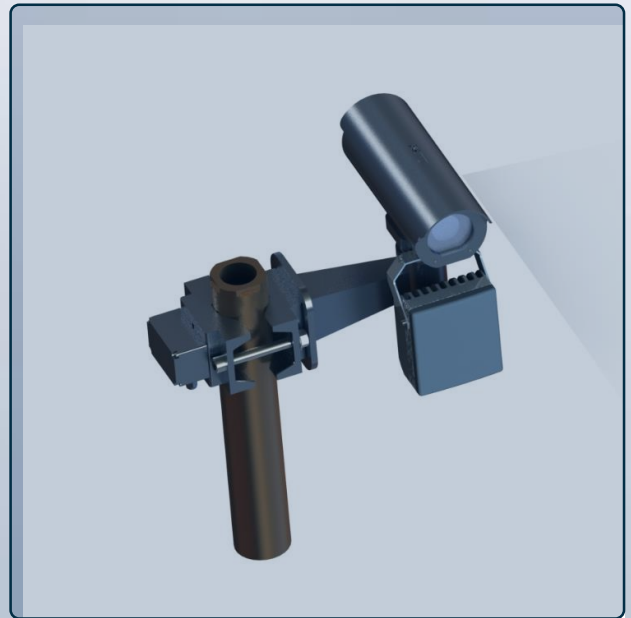


# EAGLE-HD CAM

The Eagle-HD Camera is an excellent security surveillance and day/night capable camera with progressive scan which gives wide dynamic range with low noise and with different Video Analytics



## VIDEO ANALYTICS

- ▶ Motion Detection
- ▶ Tampering Alarm
- ▶ Network disconnect
- ▶ Tripwire Violation
- ▶ Privacy Zone Masking
- ▶ Object Detection and Classification



*Super Low Noise with High dynamic range in dark with IR illuminator*

## KEY SPECIFICATIONS

- Support for Visible as well as IR Bands
- Long-range Human Detection
- Support for different picture resolutions
- Robust to Illumination Changes
- Low False Alarm Rate

# SPECIFICATIONS



## Camera

- **Sensor Type** 1/2.8" 2.1MP Progressive Scan CMOS
- **Sensor Format** 1945 (H)x1109(V)
- **Min illumination** Color: 0.01 Lux @ (F1.2, 1/30s),  
Night Mode: 0.01Lux & 0.0001Lux with External illuminator
- **Noise Reduction** 3D DNR
- **WDR** >100 dB
- **Shutter Speed** 1/1s to 1/10,000s
- **Day & Night** IR Cut Filter
- **Framerate** 25 fps / PAL
- **BLC** Supported On/Off
- **Auto White Balance** On/Off
- **Video Stream** Dual Stream, H.264

## Lens

- **Mount** C/CS-Mount
- **Focal Length** Varifocal, 3-12, 5-50mm
- **Optical Zoom/Control** 12x / Manual
- **Iris** Auto Variation

## Compression

- **Video Compression** Main Stream: H.264/MJPEG
- **Video Data Rate** 6 Mbps

## Network

- **Network Storage** Local Storage & Micro SD
- **Protocols** 1Pv4/1Pv6, TCP, UDP, RTP, RTSP, RTCP, HTTP, HTTPS, DNS, DONS, DHCP, FTP, NTP, SMTP, SNMP, UPnP, PPPoE
- **API** Open Network Video Interface (ONVIF)
- **Ethernet** IEEE 802.3

## Interface

- **Communication Interface** 1 RJ 45 Connector 10Base-T/100Base-TX Ethernet Port
- **Alarm** Two outputs
- **Video Output** 1 Vp-p Composite / NTSC/PAL
- **Power Input** PoE/12V DC
- **Enclosure** IP-66 Enclosure (Compliant IK10/MIL810)

## General

- **Operating Conditions** -30°C -+55°C , Humidity 95% or less (non-condensing)
- **Power Supply** 12 V DC  $\pm$  10%, POE IEEE 802.3 AT
- **Power Consumption & Current** Max. 6.5W (12VDC), Max. 7.5W (PoE)
- **Environmental** IP-66 Enclosure
- **Material** Aluminium
- **Dimensions** 320x120x120mm
- **Weight** 1.9 Kg

### AnaLinear Technologies

4 A (1), GMR Hyderabad Aviation SEZ,  
RGIA, Shamshabad, Hyderabad – 500108,  
Telangana India  
Email: sales@analinartech.com